



Catholic Community
FOUNDATION
OF MINNESOTA

THE ANOINTING AT BETHANY
told in memory of her

ANNUAL REPORT 2017



THE ANOINTING AT BETHANY

And while he was at Bethany...as he was reclining at table, a woman came with an alabaster flask of ointment of pure nard, very costly, and she broke the flask and poured it over his head. There were some who said to themselves indignantly, “Why was the ointment wasted like that? For this ointment could have been sold for more than three hundred denarii and give to the poor”...But Jesus said, “Leave her alone. Why do you trouble her? She has done a beautiful thing to me...”

“And truly, I say to you, wherever the gospel is proclaimed in the whole world, what she has done will be told in memory of her.”

MARK 14:3-9



Dear Friends,

I’m humbled, once again, to share Catholic Community Foundation’s (CCF) financial success from the last year. In fiscal year 2017, CCF experienced record growth in assets of \$45 million. At \$318 million in total assets, we remain the nation’s largest Catholic community foundation — a fact we herald only because it reflects the immense generosity of this local community and propels our grantmaking efforts. Last year, we granted \$14 million on behalf of our donors — a 40 percent annual increase. And since our inception, we’ve granted more than \$140 million.

Reflecting on 2017, I was struck by the powerful impact of our women philanthropists. Often quiet champions for giving, these faith-filled women understand that philanthropy can foster the future we envision. I love how St. Edith Stein writes that “woman naturally seeks to embrace that which is living, personal, and whole.” Doesn’t that perfectly describe the community we seek to build? At CCF, women philanthropists contribute to building that kind of community every day.

Jesus reaffirms these invaluable contributions in the anointing at Bethany. Defending a woman who has anointed his head with costly oil, Jesus says: “And truly, I say to you, wherever the gospel is preached in the whole world, what she has done will be told in memory of her.” (Mark 14:8-9) That legacy lives on today. Every time a woman acts with compassion, love, and faith, she steps into this Gospel story and into that sacred truth.

In this annual report, you will read inspiring stories of women philanthropists who have done just that. You’ll read how the League of Catholic Women reimagined their contribution to our community through philanthropy, how two women have chosen to build their philanthropic legacies, how CCF’s social impact grants help young mothers in crisis, and how a woman’s final gift has inspired two parishes to greater foresight and perpetual stewardship.

Living, personal, and whole, women are foundational to philanthropy and the community we seek to build. It’s our honor to tell their stories and advance their perpetual legacies. With that, I enthusiastically share with you this year’s annual report, *Told in Memory of Her*.

Sincerely,

A handwritten signature in dark ink, reading "Anne", with a long, sweeping flourish extending to the right.

Anne Cullen Miller, MBA
President

OUR MISSION

The Catholic Community Foundation was founded in 1992 with the mission to support financially the spiritual, educational, and social needs of our Catholic community.

OUR GUIDING PRINCIPLES

The Catholic Community Foundation keeps faith with its donors through a statement of principles adopted by its Board of Directors. These principles are designed to guide the Foundation in its mission and commit the Foundation to be Catholic, catholic (broad in scope), and candid (to be true to the faith); supportive of a wide range of programs; and accountable to both donors and beneficiaries.

CATHOLIC IDENTITY — We reflect our Catholic faith in all we do; embrace the breadth, diversity, and commonality of Catholic interests; and assure that investments and grant recipients are in alignment with Catholic values.

SERVICE — We respond to the financial needs of the Catholic community and contribute to effective solutions; collaborate with other nonprofit organizations when consistent with our mission; and provide for the needs of future generations.

PUBLIC ACCOUNTABILITY — We recognize and act on the understanding that community foundations are sustained by public trust, which is earned by full, open, and public disclosure.

THE ANOINTING AT BETHANY told in memory of her

contents

4	2017 Funds and Grants Snapshot
6	Financial Reports
8	Trends Up for Women’s Giving
10	Tradition Inspires Countless Tomorrows
12	Institutional Endowed Funds
14	Philanthropist Profile: Pat Huber / Being A Good Steward
16	Endowed Funds
18	Philanthropist Profile: Julie Hurley / Paying it Forward
20	Donor Advised Funds
22	One Legacy Lights the Way for Others
26	Legacy Society Members
28	From Homelessness to Independence with Kindness and Support
32	Legacy Funds
34	Agency Funds
35	Gifts to Support Our Mission
36	Board of Directors
37	Staff

2017

SNAPSHOT

\$318 Million

ASSETS HELD BY CCF

38

NEW FUNDS
OPENED

- FUND TYPES
- 7 - Agency
 - 4 - Endowed
 - 1 - Charitable Gifts
Annuities/Trusts
 - 16 - Donor Advised
 - 8 - Institutional
Endowed
 - 2 - Agency funds
converted to
Institutional
Endowed funds

TOTAL FUNDS

1,087

as of 6.30.17

\$45 Million

NEW
ASSETS

\$13.6 Million

GRANTS DISTRIBUTED

Donor Advised Funds
(includes a donor-directed estate grant)
\$9.5 Million

Other unrestricted funds
\$376 Thousand

Endowed Funds
\$2.8 Million

Institutional Endowed Funds
\$879 Thousand

GRANTS BY
SOURCE

Educational
\$5.0 Million

Spiritual
\$5.6 Million

Social
\$3.0 Million

GRANTS
BY IMPACT
AREA

2,118

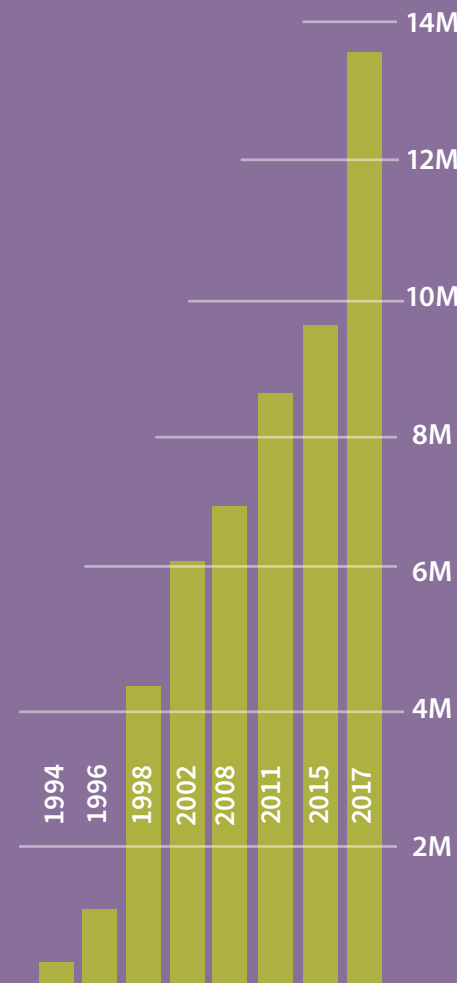
TOTAL GRANTS
DISTRIBUTED IN 2017

9% (\$1.3M)
CCF DIRECTED

91%
(\$12.3M)
DONOR DIRECTED

TOTAL
GRANTEES
744

GRANTMAKING
OVER THE YEARS



MORE THAN \$141
Million

GRANTS DISTRIBUTED
SINCE 1994

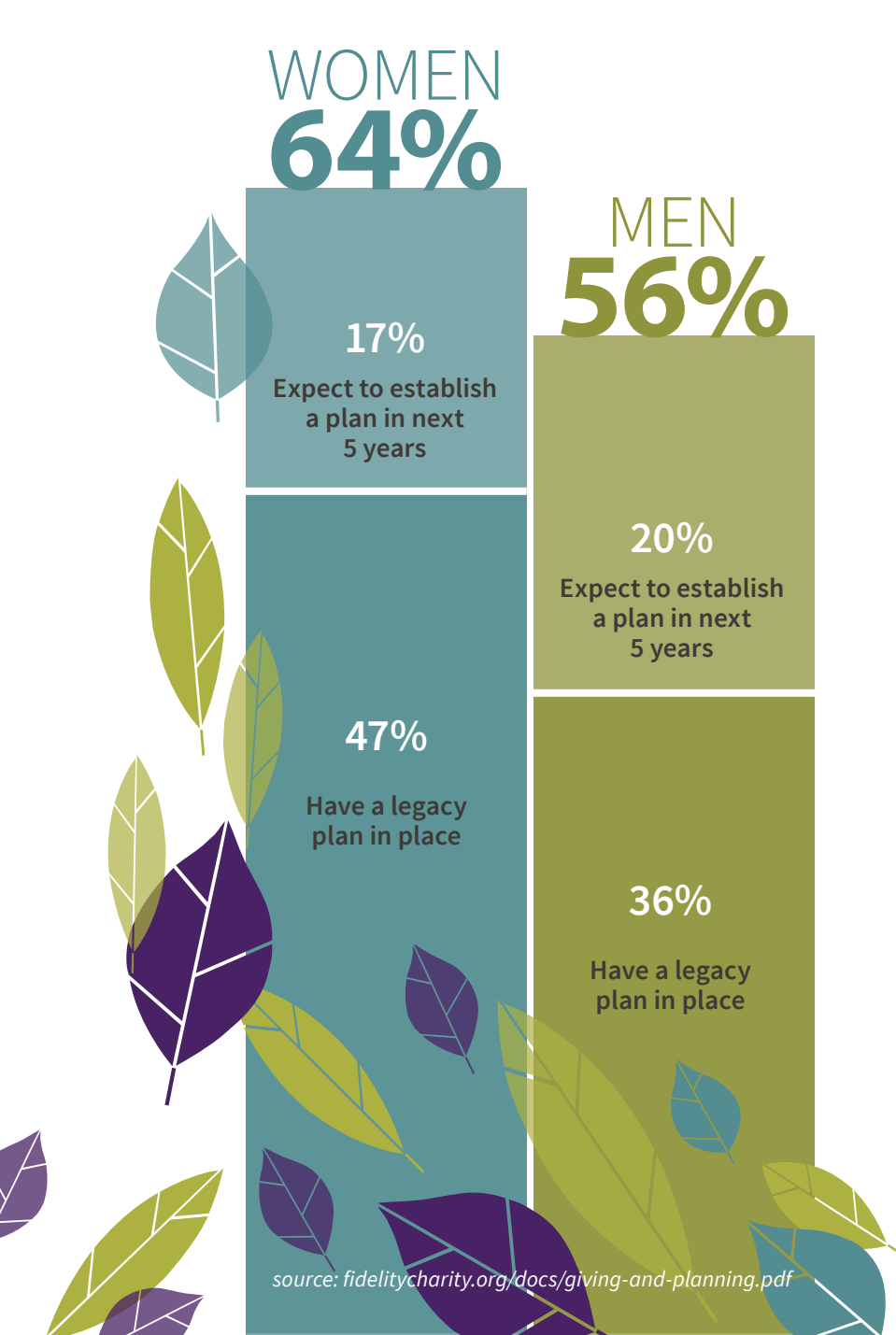
STATEMENTS OF ACTIVITIES

For the years ending June 30	2017	2016
Revenue		
Total Contributions	\$ 28,372,666	\$ 16,855,090
Less: Amounts Received for Beneficial Endowments	4,200,978	3,091,064
Net Contributions	24,171,688	13,764,026
Management Fee Income	956,611	935,594
Investment Gain (Loss), Net of Investment Expenses	14,201,291	(2,409,853)
Change in Value of Split Interest Agreements	159,850	(539,767)
Total Revenue	39,489,440	11,750,000
Program Grants		
Total Grants	13,588,217	9,939,568
Less: Grants Made on Beneficial Endowments	879,000	815,402
Net Grants	12,709,217	9,124,166
Operating Expenses		
Donor Relations & Development	1,015,008	899,481
Management & General	799,361	881,703
Grant Services	320,041	317,192
Total Expense	2,134,410	2,098,376
Change in Net Assets	24,645,813	527,458
Beginning Net Assets	118,829,318	118,301,860
Ending Net Assets	\$ 143,475,131	\$ 118,829,318

STATEMENTS OF FINANCIAL POSITION

As of June 30	2017	2016
Assets		
Cash & Cash Equivalents	\$ 7,932,006	\$ 6,072,884
Investments	301,164,482	260,156,045
Beneficial Interest in Trusts	4,261,615	477,480
Cash Surrender Value of Insurance Policies	3,593,239	4,480,494
Pledges	802,149	903,785
Other Assets	592,242	479,707
Total Assets	\$ 318,345,733	\$ 272,570,395
Liabilities		
Accounts Payable & Accrued Liabilities	\$ 1,184,758	\$ 1,195,872
Agency Obligations	131,225,177	116,663,652
Beneficiary Endowments	35,818,861	28,622,135
Charitable Trust & Gift Annuity Obligations	6,641,806	7,259,418
Total Liabilities	174,870,602	153,741,077
Net Assets	143,475,131	118,829,318
Total Liabilities & Net Assets	\$ 318,345,733	\$ 272,570,395

Audited financial statements containing all required disclosures and IRS Form 990 are available at www.ccf-mn.org.



trends up for women's giving

As women's economic power and educational achievement grow, women are influencing household and economic decision-making and transforming the philanthropic landscape like never before. With women now controlling more than half of all U.S. wealth, trends in women's giving all point up.

Historically, women have given generously of their time and talent, but women's ability to give financially is a more recent development. As women's economic power and educational achievement grows, women are influencing household and economic decision-making and transforming the philanthropic landscape like never before. With women now controlling more than half of all U.S. wealth, trends in women's giving all point up.

"It's really an exciting time," says Mary Haeg, development officer for the Catholic Community Foundation of Minnesota (CCF). "We are seeing unprecedented growth in the ability of women to participate financially."

Different life experiences may lead to differences in giving style. Single women are more likely than single men to give and give more. Married couples give more than singles, and households headed by women are more likely to give and give more than those headed by men.

THE SILENT GENERATION (1928-1945)

As a result of a momentous transfer of wealth from previous generations and spouses, many women in their 80s and older now have considerable resources. Some are completely comfortable taking charge, while others, who grew up during the Depression, may not trust that the money will last or feel as though it isn't theirs to give away.

"If they inherited their wealth, they sometimes feel like it isn't really their money," says Beth Halloran, executive vice president and chief advancement officer at St. Catherine's University. Because these women view themselves as the guardians of inherited wealth, they tend to give smaller amounts to a wide variety of organizations over an extended period of time.

BABY BOOMERS (1946-1964)

It's a different story for female baby boomers now in their 50s and 60s. These women have spent significant time in the workforce and have frequently contributed to household finances or have always managed their own assets. Rather than viewing themselves as guardians of inherited wealth, boomer women view themselves as owners of earned wealth.

Baby boomer women enjoy collaborating. As with membership in other social activities, such as faith-based groups and book clubs, women outnumber men in giving circles and collective giving groups. Their giving is tied to social networks and to trust in others. They invest in women-centric causes, as they believe giving to women and girls provides the best social returns.

GEN X (1965-1980) AND MILLENNIALS (1981-1995)

Young women, emerging philanthropists now in their 30s and 40s, view work outside the home and control of their own finances as givens. These women also delight in collaborative giving, but their groups are less likely to be women only, and their causes are unlikely to be female-centric. Young women lead the way in crowd funding and supporting online giving platforms. Generally, they respond to a message of improving the world, but they are more interested in systemic change than in direct service.

"Younger women are less interested in providing a meal and much more interested in knowing why someone must rely on charity to eat," says Halloran. "They will spend their time serving meals, but their philanthropic dollars are more likely to go upstream."

Women come to CCF with unique backgrounds, stories, and causes they hold dear. "We don't make assumptions," says Haeg. "We really want to listen, learn, and support women as they forge their own paths forward in philanthropy." ●



tradition inspires countless tomorrows

An independent nonprofit organization, unaffiliated with any particular parish or diocese, the League of Catholic Women has been developing creative solutions to the problems facing women in every decade of its 106-year history. Four years ago, these dynamic women were faced with a daunting challenge of their own.

For 65 years, the League of Catholic Women had operated out of a building it owned at 207 South Ninth Street in downtown Minneapolis. For many years, the cost of maintaining that beloved building was consuming an unsustainable percentage of the League's financial resources — and a decision to sell the building was finally made.

"There was a tremendous amount of affection for the building and emotion around the sale," says Past President Fran Rusciano Murnane. "League members had been married there — but we simply couldn't afford to maintain a space that size."

After the sale, the League moved into a handsome new office at the Woman's Club and immediately turned its attention to bringing the League back from the brink of collapse. "Save the League" was the mantra for members who were committed to attracting new members and breathing new life into the organization.

Meanwhile the proceeds from the sale were waiting a decision from the board of directors.

A SHARED PASSION FOR MAKING A DIFFERENCE

Anne Lawler, who helped guide development efforts for the League during her time on the board, used her background in accounting to research various investment options for proceeds from the building sale — including Murnane's suggestion of the Catholic Community Foundation of Minnesota (CCF).

Lawler was impressed with both the core values and financial returns offered by CCF "When CCF presented to the board, it was like a light

went on," says Lawler. "We knew that this was where we needed to put our money. You could tell that they were passionate about what they do — it wasn't just a job for them, it was a calling."

In April, the League Board of Directors voted unanimously to invest more than \$2 million with CCF, putting \$1,500,000 in a permanent endowment fund where the principal can't be touched, and the remainder into a more liquid agency fund.

MAKING SMALL GRANTS WITH ENORMOUS IMPACT

The League's budget this year is balanced at about \$60,000 — both income and revenue are equal — so the investment income the League earns from its CCF accounts won't be needed to advance current business, programs, or outreach. A percentage can be reinvested for growth and another used to start or enhance an existing program at the League's discretion.

First fruits from the investment income fund a micro grant program, envisioned in 2013 when saving the League was at its height, where a specific amount of money is given to an individual for a life-enhancing need. The League is partnering with two other 501(c)(3) organizations, Jeremiah House and Sarah's: An Oasis for Women, to identify women who can benefit from the micro grants.

CCF is another valuable community partner. "They have such deep relationships within the Catholic community," says Murnane. "They can always put you in touch with somebody they know who can help you with whatever you're trying to do." ●

Former presidents of the League of Catholic Women Left to Right: Judy Dawes, Fran Rusciano Murnane, Maureen Neerland

Institutional Endowed Funds

An Institutional Endowed Fund is a permanent fund established by an organization to support and sustain its own ministries. When an institution invests in a permanently endowed fund at the Catholic Community Foundation, it makes a commitment to ensuring that its mission continues on for future generations.

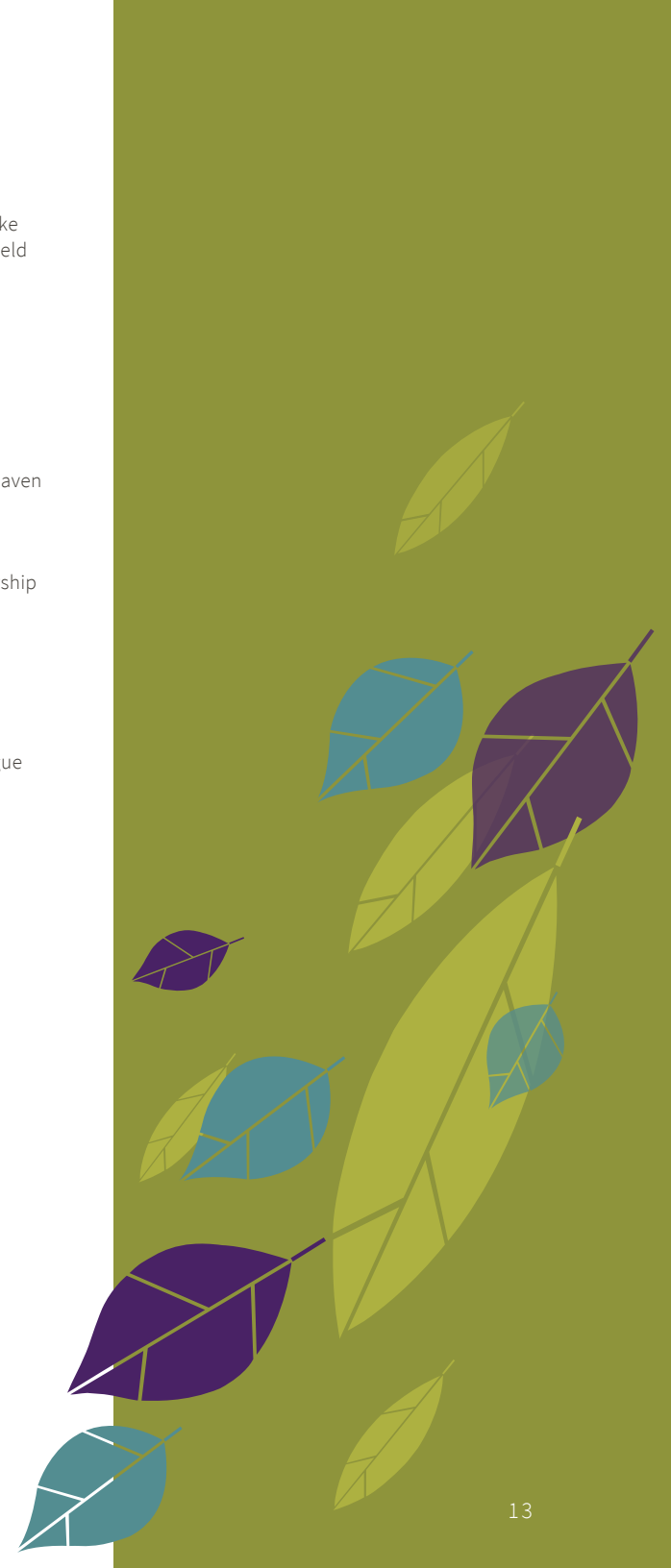
Bolded fund names indicate funds established in fiscal year 2017.

A **Aim Higher Foundation Endowment Fund**
Assumption Cemetery Perpetual Care Trust Fund, Richfield
C Carmen Pampa Endowment Fund, St. Paul
Catholic Services Appeal Foundation Endowment Funds, St. Paul
Center for Mission Alfred E. Hauwiller Endowment Fund, St. Paul
Center for Mission Mustard Seed Mission Endowment Fund, St. Paul
Center for Mission Fr. Karl Wittman Anna Marie Eisenmenger and Odo Reder Endowment Fund, St. Paul
CommonBond Communities Housing Endowment Fund, St. Paul
D Diocese of New Ulm Archbishop John C. Nienstedt Catholic Schools Scholarship Fund
Diocese of New Ulm Bishop LeVoir Catholic School Endowment Fund
F Faithful Shepherd Catholic School Rev. Charles V. Lachowitzner Endowment Fund, Eagan
Franciscan Retreats Endowment Fund, Prior Lake
G Glenn Catholic Senior Communities, Inc. Fund, Robbinsdale
Good Shepherd Endowment Fund, Golden Valley
Guardian Angels School Trust Fund, Chaska
Guardian Angels Capital Project Endowment Fund, Oakdale
Guardian Angels Cemetery Endowment Fund, Oakdale
Guardian Angels Arthur Hoff Endowment Fund, Oakdale
Guild Incorporated Endowment Fund, St. Paul
H Holy Family Church Seminarian Endowment Fund, Silver Lake
Holy Name Endowment Fund, Minneapolis
Holy Name of Jesus Church Good Samaritan Funds, Wayzata
Holy Trinity Operating Endowment Fund, South St. Paul
I Immaculate Conception Endowment Fund, Lonsdale
Immaculate Heart Church Endowment Fund, Crosslake
Immaculate Heart of Mary Catholic Charities Endowment Fund, Minnetonka
Immaculate Heart of Mary Faith Formation Endowment Fund, Minnetonka
Immaculate Heart of Mary General Operating Endowment Fund, Minnetonka
Immaculate Heart of Mary Maintenance Reserve Endowment Fund, Minnetonka
Immaculate Heart of Mary Scholarship for IHM Students Endowment Fund, Minnetonka
Incarnation Parish Endowment Fund, Minneapolis
L **League of Catholic Women Endowment Fund**
M M.T. Hill Archdiocesan Invalid Priests Trust Funds, St. Paul
M.T. Hill Christian Brothers Trust Fund, St. Paul
M.T. Hill Cretin-Durham Hall Trust Funds, St. Paul
N Nativity of Mary Endowment Trust Fund, Bloomington
Nativity of Mary School Endowment Trust Fund, Bloomington
NET Ministries Alumni Endowment Fund, West St. Paul
NET Ministries Endowment Fund, West St. Paul
New Prague Area Cemetery Fund, New Prague

O Our Lady Cemetery Fund, Grove City
Our Lady of Grace Fr. Robert T. Cassidy Scholarship Endowment Fund, Edina
Our Lady Of Grace Catholic School Endowment Fund, Edina
Our Lady of Grace Endowment Trust Fund, Edina
Our Lady of the Lake Cemetery Endowment Trust Fund, Mound
Our Lady of the Lake Parish Endowment Trust Fund, Mound
Our Lady of the Lake School Endowment Trust Fund, Mound
Our Lady of the Lakes Perpetual Care Fund, Spicer
Our Lady Of Peace Parish Endowment Fund, Minneapolis
Our Lady of the Prairie Parish Endowment Fund, Belle Plaine
P Pacem In Terris Endowment Fund, St. Francis
Pax Christi Community Endowment Fund, Eden Prairie
Presentation of the BVM Grade School Parish Endowment Fund, Maplewood
Presentation Legacy Foundation Fund, Maplewood
R **Risen Christ Catholic School - John P. and Mary L. Byron Endowment Fund, Minneapolis**
Ss. Cyril and Methodius Church Deacon John Matlon Memorial Endowment Fund, Minneapolis
Ss. Joachim and Anne Endowment Fund, Shakopee
Ss. Peter and Paul Parish Education Endowment Fund, Loretto
St.A St. Albert Cemetery Perpetual Care Fund, Albertville
St. Albert the Great Endowment Fund, Minneapolis
St. Aloysius Cemetery Fund, Olivia
St. Alphonsus School Teachers Development Endowment Fund, Brooklyn Center
St. Alphonsus School Tuition Assistance Endowment Fund, Brooklyn Center
St. Ambrose Church Bishop Richard Pates Endowment Fund, Woodbury
St. Anastasia Endowment Fund, Hutchinson
St. Andrew Parish Religious Education Fund, Montevideo
St. Anne Cemetery Endowment Trust Fund, Hamel
St.B St. Bernard Church Marie Tschida Pranke Scholarship Fund, St. Paul
St. Bridget of Sweden Endowment Fund, Lindstrom
St.C St. Cecilia John Mondati Endowment Fund, St. Paul
St. Croix Catholic School Endowment Fund, Stillwater
St. Croix Valley Faith Formation Endowment Fund, Stillwater
St.E St. Eloi Parish Endowment Fund, Minneota
St.G St. Gabriel the Archangel Affiliated School Endowment Fund, Hopkins
St. Gabriel the Archangel Endowment Fund, Hopkins
St. Gerard Majella Endowment Fund, Brooklyn Park
St.H St. Helena Endowment Fund, Minneapolis
St. Henry Cemetery Perpetual Care Trust Fund, Monticello
St. Hubert Catholic Community Advisory Fund, Chanhassen
St.J **St. John Neumann Catholic Church Parish Endowment Fund, Eagan**

St. John the Baptist Resurrection Cemetery Care and Maintenance Fund, Excelsior
St. John the Baptist Capital Endowment Fund, New Brighton
St. John the Baptist Cemetery Endowment Fund, New Brighton
St. John the Baptist Operating Endowment Fund, New Brighton
St. John the Baptist Tuition Assistance Fund, New Brighton
St. John the Baptist Cemetery Endowment Fund, Savage
St. John the Baptist Parish Endowment Fund, Savage
St. John the Baptist Parish Endowment for Tuition Assistance Fund, Savage
St. John the Evangelist Tuition Assistance Endowment Fund, Duluth
St. Joseph Church Fr. Frank Brunner Endowment Fund, Montevideo
St. Joseph Parish Faith Formation Financial Aid Endowment Fund, Red Wing
St.M St. Margaret Mary Endowment Fund, Golden Valley
St. Mark Parish Endowment Trust Fund, St. Paul
St. Mark Peller Scholarship Fund, St. Paul
St. Mary Perpetual Care Endowment Fund, Arlington
St. Mary School Endowment Fund, Bird Island
St. Mary Cemetery Fund, Olivia
St. Mary of the Lake Cemetery Perpetual Care Fund, White Bear Lake
St. Matthew Education Endowment Fund, West St. Paul
St. Michael Cemetery Perpetual Care Fund, Farmington
St. Michael Designated Endowment Trust Fund, Farmington
St. Michael Cemetery Fund, Milroy
St. Michael Church and School Advisory Fund, Prior Lake
St. Michael Endowment Fund, Prior Lake
St.N St. Nicholas Cemetery Perpetual Care Fund, Carver
St.O St. Odilia Prayer Garden Perpetual Care Fund, Shoreview
St. Olaf Church Dorothy Ellstrom Endowment for Spiritual Enrichment Fund, Minneapolis
St. Olaf Church Endowment Fund, Minneapolis
St.P St. Pascal Baylon Endowment Fund, St. Paul
St. Patrick / St. Francis General Endowment Fund, St. Paul
St. Patrick Building Fund, Inver Grove Heights
St. Patrick Designated Endowment Trust Fund, Inver Grove Heights
St. Patrick Endowment Fund, St. Paul
St. Paul's Monastery Endowment Fund, St. Paul
St. Paul Seminary General Seminary Endowment Fund, St. Paul
St. Paul Seminary Msgr. Ambrose Hayden - Seminary Fund, St. Paul
St. Peter School Endowment Fund, Forest Lake
St. Peter Catholic School Operating Endowment Fund, North St. Paul
St. Peter Cemetery Care Endowment Fund, North St. Paul
St. Peter Parish Operating Endowment Fund, North St. Paul
St. Peter School Tuition Assistance Endowment Fund, North St. Paul
St. Philip Church Clifford and Audrey Olson Endowment Fund, Litchfield

St. Pius X Permanent Endowment Fund, White Bear Lake
St.R St. Richard BTCS Scholarship Endowment Fund, Richfield
St. Richard Undesignated Endowment Fund, Richfield
St. Rose of Lima Legacy Fund, Roseville
St. Rose of Lima Parish School Mischke Family Endowment Fund, Roseville
St.S St. Stephen Church Emmett and Augusta Goff Endowment Fund, Minneapolis
St.T St. Therese Advisory Fund, Deephaven
St. Therese School Advisory Fund, Deephaven
St. Therese Good Samaritan Endowment Fund, Deephaven
St. Therese Pastoral Care Endowment Fund, St. Louis Park
St. Thomas the Apostle Endowment Fund, St. Paul
St. Thomas Aquinas Goldie and Lorraine Buda Scholarship Fund, St. Paul Park
St. Timothy Endowment Fund, Blaine
St.V St. Victoria Cemetery Perpetual Care Endowment Fund, Victoria
St. Victoria Parish Unrestricted Endowment Fund, Victoria
St.W St. Wenceslaus Cemetery Endowment Fund, New Prague
St. Wenceslaus Endowment Fund, New Prague
St. Wenceslaus School Endowment Fund, New Prague
T Trinity Founding Churches Educational Endowment Fund, St. Paul





PHILANTHROPIST PROFILE: PAT HUBER

Being a good steward

Pat Huber remembers the exact moment when her outlook on giving shifted.

She was sitting among strong, philanthropic-minded Catholic women like Rose Totino, Elizabeth Hidding, Barbara Koch, and Helen Healy, learning about ways to support NET Ministries. It was also the first time that she met then-Bishop Harry Flynn.

“He said that we’re called to be disciples, and we’re called to proclaim the name of Jesus,” Huber remembered. “When I heard that in June of 1994, I listened and I took that message to heart.”

She joined the board of NET Ministries later that year, propelling her already generous life into a new chapter of service and legacy building.

Huber, 69, grew up in St. Paul, attending St. Joseph’s Academy and later the College of St. Catherine. She saw strong leadership traits in her mother, who had a successful finance career, and the Sisters of St. Joseph of Carondelet served as mentors throughout her education.

Huber married her first husband, Bruce Huber, in 1970 and they settled outside Hudson, Wisconsin, where they attended St. Patrick Parish. As they raised their three children, they were active in their community, with Pat teaching at the Catholic school and chairing the school board while also volunteering with a crisis pregnancy center. Bruce participated in the finance council and served on the board of trustees at his alma mater, Hill Murray School, as he built his business career in Minneapolis.

As a family, they journeyed to Africa in 1997 to climb Mount Kilimanjaro; one year later, Bruce was diagnosed with a lung disease that would take his life in 2000.

“As a young widow, I saw that I had an opportunity to honor Bruce’s memory by continuing the commitment to Catholic education, the Catholic Church, NET Ministries, Saint Paul’s Outreach (SPO), and the seminary,” Huber says.

She learned about the Catholic Community Foundation (CCF) through NET Ministries and joined the board in 2005. Huber then established a donor advised fund with a focus of passing on her faith. As chair of CCF’s Development and Marketing Committee, she was instrumental in the organization’s strategic growth plan and used her network to increase further support for CCF.

“Pat talks the talk and walks the walk,” CCF President Anne Cullen Miller says. “She’s been on the front line as a woman of her generation to get involved so personally.”

Huber believes that women have a unique role to play in serving on boards and making philanthropic decisions. “I think that women tend to integrate many wide-ranging views in making those decisions,” she explained.

Her board term ended in 2009, but Huber remains active with CCF, NET Ministries, and SPO. Now married to Jerry Cawley with seven total grown children and 12 grandchildren, they want to set a lasting example of giving that will also live on through a newly established endowment fund.

“We are called to be good stewards of our talents and treasures,” she says. “I consider CCF the best way to be a steward of the gifts that I’ve been given.” ●

Endowed Funds

An Endowed Fund is a permanent gift that will provide a perpetual source of funding to designated charities or charitable causes. With an Endowed Fund, charitable giving lives on for countless generations. Anyone can create an Endowed Fund at the Catholic Community Foundation to support causes near to his or her heart.

Bolded fund names indicate funds established in fiscal year 2017.

A	Annunciation Parish Endowment Fund, Minneapolis	E	Elder Family Endowment Fund	I	Thomas and Patricia Holloran Catholic Charities Endowment Fund
	Archdiocesan Venezuelan Mission Endowment Fund		Marilou Eldred, Ph.D. Legacy Endowment Fund		Rev. Leo Huber Charitable Endowment Funds
			Estrem Family Endowment Fund		Hurley Family Caritas Fund
B	Severne M. Banack Endowment Fund	F	Frank E. and Rosemarie V. Evangelist Endowment Fund	J	Immaculate Conception Church Endowment Fund, Columbia Heights
	Benilde-St. Margaret School Endowment Fund, St. Louis Park				Immaculate Heart of Mary School Tuition Assistance Endowment Fund, Minnetonka
	Blessed Virgin Mary Charitable Fund		Family of Faith Catholic Charities Endowment Funds		Jeffery Paul Johnson Memorial Endowment Fund
C	Harold and Patricia Boerboom Priests Retirement Endowment Fund	L	Family of Faith Education Assistance Endowment Fund	K	Margaret D. Kane Endowment Fund
	Brown-Mountain Family Advised Endowment Fund		Family of Faith General Endowment Fund		Sr. Brenda Kelzer Scholarship Endowment Fund
	Jerome J. Brown Endowment Fund		Family of Faith Religious Education Endowment Funds		Abigail Kiesner Endowment Fund for Advancement of Professional Women
D	Brya Family Endowment Fund	G	Family of Faith Support and Education for Priests Endowment Fund	M	Dr. Ellsworth and Mae F. Kneal Endowment Fund
	Robert and Dolores Buril Endowment Fund		Family of Faith Tuition Assistance Endowment Funds		Elaine and Allen Kolles Endowment Fund
	Burns Family Charitable Endowment Fund		Raymond and Genevieve Feltl St. Joseph Church Endowment Funds, Hopkins		Carlo J. LaManna Family Scholarship Endowment Fund for Tuition Assistance
E	Vivian M. Byers Endowment Funds for Education	H	Florence A Florance Scholarship Endowment Fund for Academy of Holy Angels		Carlo J. LaManna Family Scholarship Endowment Fund for St. Paul Seminary
	Carondelet Life Care Ministries Endowment Fund		Florence A Florance Scholarship Endowment Fund for DeLaSalle High School		Fr. Patrick Lannan Endowment Fund
	Connie D. and William C. Carroll Scholarship Endowment Fund		Archbishop Flynn Legacy of Faith Endowment Fund		Lannan Family Endowment Fund for St. Thomas Academy
F	Cathedral Foundation Endowment Fund		Friends of Catholic Urban Schools Endowment Fund		Robert E. and Florence D. Larkin Charitable Endowment Fund
	Catholic Youth Camp Endowment Fund		Msgr. Francis J. Garvey Endowment Fund		Philip P. LaVelle Charitable Endowment Fund
	Center for Mission Endowment Fund		Richard and Delphine Goldstrand Charitable Endowment Fund		Lenzmeier Family Endowment Fund
G	Cerenity-Marian Center of St. Paul Catholic Service to the Elderly Endowment Fund		Good Shepherd School Education Endowment Fund, Golden Valley		Clara Hill Lindley Clergy Endowment Fund
	Joseph and Fern Check Legacy Endowment Fund		Tom and Joleen Greene Family Endowment Fund		Erasmus C. Lindley Charitable Endowment Fund
	Community Priorities Endowment Fund		John and Patricia Gries Endowment Fund		Lyons Family Tuition Assistance Endowment Fund
H	Mary Ellen Priebe Conzemius Endowment Fund		Growing in Faith Endowment Fund		Catherine O'Connor Marien Legacy Endowment Fund
	Conzemius Endowment Fund for Cretin-Derham Hall		Guest House Endowment Fund		Mary Mother of God Endowment Fund, Burnsville
	Cora Cooty Endowment Fund		Guild of Catholic Women Endowment Fund		Burt and Patricia McGlynn Family Scholarship Endowment Fund
I	Rev. Francis Costiou, OMI Memorial Endowment Fund		Haugh Family Endowment Fund for Catholic Teachers and Religious Education Directors		O. Bernard and Dorothy Ann McGuire Tuition Assistance Endowment Fund for St. Mark School, St. Paul
	Crosier Fathers and Brothers Endowment Fund		Haugh Family Endowment Fund for Tuition Support of Elementary Schools		Donald and Bernice Messerich Family Charitable Fund
	Demontreville Jesuit Retreat House Endowment Fund		Hazel C. Heim Endowment Fund		Milroy Family Designated Endowment Fund
J	Diaconate Educational Assistance Endowment Fund		Msgr. Patrick J. Hessian Fund		
	William C. and Corinne J. Dietrich Charitable Endowment Funds		Earl and Kathy Hoagland Sacred Manoomin Endowment Fund		
	Maureen Dolan Jurek Charitable Endowment Fund				
K	Edward and Margaret Dudley Memorial Endowment Fund				

L	Phillip and Barbara Milroy Cathedral School Scholarship Endowment Fund, Superior, WI	R	Arthur J. Popehn Family Foundation Endowment Fund	T	St. John Vianney Seminary Endowment Fund
	Ministerial Enrichment Endowment Fund		Donald and Veronica Poquette Charitable Endowment Fund		St. Joseph Parish Endowment Fund, West St. Paul
	Missionary Sisters of St. Peter Claver Endowment Fund		Preaching and Presiding Institute Endowment Fund		St. Joseph's Home for Children Endowment Fund
M	Molz Family Endowment Fund	S	Priests Continuing Education Endowment Fund	V	St. Mark Scholarship Endowment Fund, St. Paul
	Kathryn Mooney Endowment Fund for Annunciation Church, Minneapolis		Priests Retirement Endowment Fund		St. Michael Religious Education Endowment Fund, Stillwater
	Kathryn Mooney Endowment Fund for Basilica of St. Mary, Minneapolis		Rauenhorst Family Scholarship Endowment Fund		St. Paul Seminary Endowment Fund
N	Kathryn Mooney Endowment Fund for Catholic Charities		William and Joanne Reiling Endowment Fund	W	St. Paul's Outreach Endowment Fund
	Kathryn Mooney Endowment Fund for St. Olaf Catholic Church, Minneapolis		Carl J. Remick Jr. Endowment Fund		St. Peter Claver Tuition Aid Endowment Fund, St. Paul
	Kathryn Mooney Endowment Fund for St. Stephen Church, Minneapolis		Jim and Chriss Renier Scholarship Endowment Fund		St. Peter School Tuition Assistance Endowment Fund, North St. Paul
O	Kathryn Mooney Endowment Fund for St. John Vianney Seminary		Reserve Township Endowment Fund		St. Rose of Lima Tuition Assistance Endowment Fund, Roseville
	W. Edward Mullin and Mary Hester Mullin Charitable Endowment Fund		Respect Life Program Endowment Fund		St. Thomas Academy Endowment Fund
	Catherine G. Murphy Endowment Fund for Catholic Charities		Richard G. and Dorothy E. Revord Family Charitable Endowment Funds		St. Thomas Aquinas Catholic School Endowment Fund, International Falls
P	Catherine G. Murphy Endowment Fund for St. Paul Seminary		Cole Richardson Endowment Fund		Star Family Endowment Fund
	Catherine G. Murphy Endowment Fund for St. Thomas More Church, St. Paul		Most Rev. John R. Roach Endowment Fund		Sister Jean Thuerauf Endowment Fund
	Nativity of Our Lord Endowment Funds, St. Paul		Sacred Heart Fraternity of Secular Franciscan Endowment Fund		Total Life Care Centers Endowment Fund
	Nazareth Hall Endowment Funds		George and Evelyn Sayer Scholarship Endowment Fund for St. John the Baptist, Excelsior		Trinity Foundation Educational Endowment Fund, St. Louis Park
	Newman Center University Christian Studies Endowment Fund		Ronald and Nadine Schoenborn Endowment Fund		Corinne Van Heel Endowment Fund
	Nilles Family Endowment Fund		Kenneth W. Scully Endowment Fund		Norman W. and Nancy B. Villwock Family Endowment Fund
	Alex and Loretta Novak Family Endowment Fund		Seifert Family Endowment Fund		Wagner Family Endowment Fund
	Our Lady of Good Counsel Endowment Fund		David and Patricia Serreyn Endowment Fund		Joseph and Angeline Waletzko Scholarship Endowment Fund
	Our Lady of Peace Education Endowment Fund, Minneapolis		Dr. Gregory Sheehan Scholarship Endowment Fund		Wegscheider Saint Paul Seminary Endowment Fund
	Our Lady of Peace Home Endowment Fund		Sisters of the Good Shepherd Endowment Fund		Robert and Mary Wesslund Endowment Fund for St. Odilia Church, Shoreview
	Fr. William J. Paron Endowment Fund		Skipper Slawik Endowment Fund		Martha H. Wiggins Charitable Designated Endowment Funds
	Patrons of St. Anne School Endowment Fund, Le Sueur		Rev. Henry J. Sledz Endowment Fund for New City Ministry		Otto C. Winzen Charitable Endowment Funds
	Valeria Pezzani Endowment Funds		Slipka Family Charitable Endowment Fund		Emil and Julia Wittman Memorial Endowment Fund
	Piché Family Endowment Fund		George and Jeanne Slipka Charitable Endowment Fund		Rev. Richard J. Wolter Endowment Fund
	Anthony and Melva Pierce Endowment Fund		Spiritual Formation of Catholic School Teachers Endowment Fund		
			St. Catherine University Endowment Fund		
			St. John the Evangelist Tuition Assistance Endowment Fund, Little Canada		





Photo by Dave Hrbacek, The Catholic Spirit



PHILANTHROPIST PROFILE: JULIE HURLEY

Paying it forward

Growing up in small-town Iowa, Julie Hurley remembers the community swimming pool as a hub of summertime activity. “It was the place where everyone, including my six siblings and I, hung out.”

Years later, on a visit home, she asked her father about donations toward a pool refurbishment. “Dad, why are you giving?” she asked. “You don’t have kids in school anymore.” His reply: “Someone built the pool so you could enjoy it.”

It was Hurley’s first giving ah-ha moment.

Initially, Hurley gave primarily of her time. “I was a room mother at my daughters’ school, I chaperoned the school carnival, ran for school board, became a member of the board’s finance committee — it just kind of progressed in that way,” she says.

Anne Cullen Miller, president of the Catholic Community Foundation (CCF), adds, “I have known Julie for many years, and I have witnessed her serve in a variety of roles at our parish, St. Joseph’s in West St. Paul. Julie demonstrates 1 Corinthians 14:1 ‘Make love your aim’ in all she takes on.”

“As we proceed on life’s journey, we become familiar with organizations that we touch — our school, our parish, our university,” says Hurley. “But the information we have is only that which comes into our small circle. Our lens is pretty narrow.”

Now generously giving of her time, talent, and treasure, Hurley has served on the CCF Board of Directors for six years and has come to realize and appreciate that the CCF lens is wide.

“The foundation is truly a reservoir of information about our community’s needs, and they have an expansive range of touchpoints,” she says. “This multifaceted knowledge allows the foundation to respond appropriately to both urgent and perpetual community needs.”

Hurley and her husband, Tom Hurley, initiated a donor advised fund with CCF in 2013. In addition to regular grantmaking, they have now started a giving tradition with their three adult daughters Kate, 32, Jacki, 30, and Samantha, 27.

Annually, the family gets together to decide which charitable organizations will receive contributions from the fund’s earnings. Of the first gathering, Hurley says, “It was such a proud and heartwarming meeting for me. Each of the girls brought something to the table that was so uniquely them and so well thought out.”

As Hurley looks ahead, she hopes the family giving practice endures. “I want giving back to be inherent in the way our family operates,” she says.

“I hope, like my father said, there is a realization that someone built it for you.” ●

Donor Advised Funds

A Donor Advised Fund facilitates intentional charitable giving in an easy-to-use format that aligns with your faith. Donor Advised Funds can be used to plan giving annually and over a lifetime.

Bolded fund names indicate funds established in fiscal year 2017.

A	Abele Family Charitable Fund	Archbishop Harry J. Flynn Charitable Fund	Norbert and Veronica Johanneck Charitable Fund	Mary Lou Mathiowetz Charitable Fund	Petesch Family Charitable Fund	Ronald and Mary Smith Charitable Fund
	ABPI Fund	M. and M. Flynn Charitable Gifting Fund	JM Joos Fund	Marjorie Mathison Hance Charitable Fund	Pfohl Family Fund	MCJ Snyder Charitable Fund
	Archdiocesan Urban Schools-Pohlad Family Gift Fund	Francis of Assisi Fund	Jeanne and John Jungbauer Family Fund	John J. and Mary Anne T. Mauriel Charitable Fund	Pihlstrom Family Fund	St. Francis Fund
B	Jo and Gordon Bailey Family Fund	Francois Family Charitable Fund	Thomas and Shirley Jungels Family Fund	McCloughan Family Fund	Pulles Catholic Family Fund	John and Margaret Staiger Family Fund
	International Beddor Fund	Franske Family Fund	Kay Mellon Fund	McElroy Christian Youth Ministry Fund	Tom and Mollie Raih Family Fund	R and M Stark Fund
	William Belkengren Charitable Fund	Eugene U. and Mary F. Frey Fund	Gregory and Michelle Keeley Family Fund	Andrea and Larry McGough Charitable Fund	Judith Rauenhorst Mahoney Family Foundation Fund	Sticha Family Charitable Fund
	Antonio and Cecilia Bernardi Charitable Fund	Friends of East Africa Fund	Clarence F. and Dorothy A. Kelzer Fund	Leo and Mary Kaye McGough Charitable Fund	Donald and Jean Regan Fund for Hill Murray	Stocks Family Fund
	Biver Family Charitable Fund	Furness Family Fund	Thomas and Diane Kemper Family Charitable Fund	McGrath Family Fund	T	Mary and Steve Stolz Fund
	Bott Family Charitable Fund	John and Emily Gainor Family Fund	Robert E. and Margaret M. Keppel Charitable Fund	Mary Cullen McKeown Charitable Fund		Tautges Family Fund
	Michael and Dolores Boyle Family Charitable Fund	Gazelle Legacy Fund	Kiffmeyer Family Fund	John D. and Jane A. McNeill Family Donor Advised Fund		Tholkes Family Charitable Fund
	Bradley Family Godshare Fund	Gary and Joan Geurts Fund	Klein Family Charitable Fund	Melsen Family Charitable Funds	S	Jeanne Thomas Charitable Fund
	Richard and Lorraine Brasket Fund	Betts and Don Giefer Fund	Leon and Kathleen Kline Family Charitable Fund	John and Patrice Menard Family Fund		Tiffin Family Fund
	Brennan Family Charitable Fund	Michael and Susan Gores Family Fund	John and Kathleen Knapp Family Fund	Ted and Laura Merriam Family Fund		Tinucci Family Charitable Fund
	Peter and Maura Brew Family Fund	Tom and Joleen Greene Family Charitable Fund	Edward and Julianne Kocourek Family Fund	Merrill Family Charitable Fund	U	Khanh Tran and Kim Vu Charitable Fund
	Bruski Family Charitable Fund	Grommesh Family Fund	Emery and Karen Koenig Fund	MGR Fund		Jeff and Susan Turner Fund
	Florian J. and Dorothy M. and Thomas L. Busch Charitable Fund	Patrick and Sally Gruber Charitable Fund	Kathleen and John Kokesh Fund	Bill and Julie Mikkelson Fund		Twomey/Lord Charitable Fund
C	Canto Family Fund	Grundtner Family Charitable Fund	Allan and Elaine Kolles Charitable Fund	Mark Miller and Anne Cullen Miller Fund	V	Underwood Sullivan Advised Fund
	Fred and Molly Commers Fund	Dan and Colette Hagen Family Fund	Kranz Family Fund	Mr. and Mrs. Douglas A. Milroy Fund		Utoft Charitable Fund
	Norbert and Mary Ellen Conzemius Fund	Haik Family Charitable Fund	Thomas and Janet Krocheski Charitable Fund	Missions of Michael Fund		Joseph and Nancy Utoft Charitable Fund
	Cook Family Charitable Fund	Halbur Family Fund	Kunkel Family Charitable Fund	Dan and Sheryl Moran Donor Advised Fund	W	Vanden Plas Family Fund
	James and Mary Crowley Fund	Jean Hammar Charitable Fund	Kevin and Maureen Lahr Fund	Dr. John Morrison and Carrie Scherer Family Fund		Vasatka Family Fund
	Hugh and Melissa Cullen Family Fund	Harrington Family Fund	Stewart W. and Kathleen M. Laird Charitable Fund	Mulcahy Family Fund		Gary and Sheri Vasko Family Fund
	Lillian Cummings Memorial Fund	Mark Hazzard and Sharon Simonson Charitable Fund	Carlo LaManna Fund	James and Franchelle Mullin Fund	Y	Bryan and Kimberly Volk Family Fund
	Tony and Jennifer DelDotto Fund	Robert and Mary Healy Family Fund	Lang Family Charitable Fund	Les and Betsy Murphy and Pete and Judy Pedersen Fund		Wagner Family Charitable Fund
	Deo Gratias Fund	Healy Family Charitable Fund	David Lano Foundation Fund	Brian and Michelle Murray Charitable Fund	Z	Warner Family Fund
	Russell Dickinson Celebrate Life Fund	Heimerman Family Charitable Fund	Regina M. LeMay Charitable Fund	Musech Family Charitable Fund		Waterfall Fund
	Diekmann Family Charitable Fund	Laura and David Hemler Charitable Fund	Letscher - Glancy Family Fund	Nangle/Naphin Family Fund		Weingartner Family Fund
	Divine Mercy Charitable Fund	Jack and Barbara J. Hessburg Fund	Morrie and Alice Leuthner Charitable Fund	Thomas and Mary Ann Newinski Family Fund	O	Jerry and Mary Welle Family Fund
	Morgan and Celine Donohue Family Fund	Hickok Family Fund	Liemandt Family Fund	Nick and Rosie of Minneapolis Fund		Wenger Family Charitable Fund
	Duc in Altum Funds	Quentin J. Hietpas Fund	Richard and Jean Lynch Fund	Opus Prize Foundation Fund	P	Wier Family Fund
	Edward and Margaret Dudley Family Charitable Fund	Fr. Jim Himmelsbach Fund	Ernie and Susan Maier Fund	Lawrence M. O'Shaughnessy Family Fund		Wingerd Family Charitable Fund
	DuFresne Family Charitable Fund	Earl and Kathy Hoagland Sacred Manoomin Funds	Maley Family Fund	P and R Charitable Fund		Michael and Pamela Wold Fund
E	Douglas M. and Kathleen A. Eiden Fund	Delores and Bernard Hofschulte Family Charitable Donor Advised Fund	Mannix Family Fund	H. William and Molly Park Family Fund	R	Steve and Lynn Wolf Fund
	Alfred O. and Mary A. Elder Charitable Fund	Bruce and Pat Huber Charitable Fund	Joseph D. and Patricia Kalil Margarit Family Fund	Harold and Wendy Parsons Fund		Jon and Kalley Yanta Family Fund
	Marilou and Don Eldred Charitable Fund	Hurley Family Fund	Martin Family Fund	Richard and Karen Pearson Family Fund		Richard D. Zarneke Charitable Fund
	Enestvedt Family Charitable Fund	Thomas and Julie Hurley Fund	Steven and Helen A. Masica Family Fund	Peichel Family Charitable Foundation Fund	T	Edward C. and Marie C. Zech Fund
	Greg and Beth Engel Fund	Interreligious Dialogue Fund		Pelner Family Charitable Fund		Marjorie Zeug Charitable Fund
	F. M. Farrell Family Fund	J and L Fund				
F	Fatima Charitable Fund	Jack and Kay Jasper Family Donor Advised Fund			S	
	Finley Family Fund	Jesucristo Resucitado Mission Fund				
	Fleming Family Charitable Fund	David Johanneck Charitable Fund				
	Paula Fluck Charitable Fund					





one legacy lights the way for others

Delora Mayer lived a solitary life. She died alone and left her entire estate to the Catholic Community Foundation (CCF). With no next of kin stepping forward, her remains were held at the Ramsey County morgue until the bank where her accounts were held contacted CCF.

“At the same time we were touched by her generosity, we were heartbroken that she had not yet been buried,” recalls CCF President Anne Cullen Miller. “Ensuring immediate Christian funeral rites and a Christian burial was our first priority — and something we as a Catholic organization were uniquely suited to do.”

A GIFT DESTINED TO INSPIRE GENEROSITY

With Mayer laid to rest, CCF began considering ways to honor her life and generosity. In 2017, CCF launched a program called *Partners for the Future* that divided Mayer’s gift into matching grants of \$25,000 that will be used to seed 15 new parish endowment funds over the next two years.

“Most parishes are so busy raising money to keep the lights on, they rarely think to ask parishioners to remember their church in their wills,” says CCF Director of Partner Relations Bill Marsella. “We hoped these matching grants would spark interest in parish endowment funds.”

SAINT JOHN NEUMANN: SEIZING THE MOMENT

St. John Neumann Catholic Church in Eagan, Minnesota, was the first parish to accept the challenge. Jean Gorell, a parishioner, understands the value of endowment funds. She had been working for several years with a committee of like-minded volunteers to launch an endowment fund. The \$25,000 Delora Mayer Matching Grant came at an opportune moment.

“All the ingredients were in place,” remembers Gorell. “We were ready to launch the public appeal, but the matching grant really fueled our energy.”

According to Marsella, the team made a “full court press” that included articles in the church bulletin, an appeal delivered by Gorell at every Mass, and enthusiastic pastoral support.



As a result of their combined efforts, the parish was able to raise \$27,400 in under six weeks. The *St. John Neumann Catholic Church, Eagan MN Parish Endowment* was established with a deposit of \$52,400. A Mass recognizing the gift and the donor was held soon after.

“We’re very excited to have the fund set up and the systems in place to move forward,” says Gorell. “The fund will grow in perpetuity and provide a sustainable source of income into the future.”

PAX CHRISTI: MORE THAN MATCHING MAYER’S GENEROSITY

In the 37 years since its founding, Pax Christi Catholic Community has donated \$4 million in 661 grants to over 200 organizations that work toward social justice. As the parish’s Financial Initiatives Team (FIT) was preparing to approach the congregation about establishing a permanent endowment fund, they centered their case statement on social justice.

“Social justice outreach is integral to our identity,” says Mary Kennedy, Pax Christi’s director of stewardship and development. “Our case statement was about raising money to support the core values and mission of the Pax Christi Catholic Community *forever*.”

The team set an ambitious financial goal of \$250,000. According to Kennedy, Mayer’s story was as much of an inspiration as the matching

grant. “She became a challenge to us and our parishioners. We said, ‘Here’s a person, just like me, just like you in the pews. She never set foot in this parish, but her gift is going to change so many lives.’”

The FIT got feedback and fine-tuned their messaging by presenting their case to past FIT members as well as members, of the Stewardship and Finance Councils. They invited 90 members of the parish to one of six small gatherings held at various FIT member homes in May. At each of the gatherings, the host couple would tell their “Pax Christi” story and then invite each guest to share his or her story before asking for a contribution to the endowment.

The FIT raised \$60,000 from those meetings before introducing the plan to the parish as a whole on Pentecost Sunday. Thanks to contributions from parishioners and proceeds from the sale of property, the *Pax Christi Community Endowment Fund* was established on June 30, 2017, with a deposit of \$274,819.

“The whole beauty of the way the Catholic Community Foundation is using the Delora Meyer gift is that it allows parishes to get the endowment off the ground,” says Kennedy. “Our gratitude for her generosity will live on in perpetuity.” ●



Legacy Society Members

The Legacy Society honors individuals and families who have entrusted their charitable legacy to the perpetual and faith-consistent stewardship of the Catholic Community Foundation. We are deeply grateful for their dedication and charitable vision. To explore making a charitable gift that will last forever, we invite you to contact our gift planning staff at 651.389.0300.

The † symbol denotes those Legacy Society members who have passed. Please hold them in your thoughts and prayers. **Bolded** names denote those members inducted into the Legacy Society this past year.

A William Altenhofen †
Bernadette Amerongen
Charles R. and Viola † Amundsen
John and Elsie Andraschko
Walter Andrychowicz †
John and Kim Arens
James A. Audette
B David and Rita Baden
Patrick and Sandy Baldwin
Severne M. Banack
Donald † and Margie Bartho
William L. Belkengren
Robert and Mary Belongie
Karl A. Berndt †
Mary M. Bettenburg
Richard and Carol Biniek
Earl and Lorraine Blaylock †
Dolores A. Blenkush †
Warren H. † and Marilyn A. Blomquist
Harold J. † and Patricia R. Boerboom
Patricia Borre
Daniel and Mary Jane Borrell
Ellen Cull Bouslough †
Dr. R. Michael and Sharon Bowen
Harold Brady
Adeline M. and Milton Brecke †
Jerome Brown †
John and Betty Bruender
Rev. John Brunner
Frank J. Bruns Jr.
Raymond S. and Helen K. Brya †
Leona L. Burke †
J. Donald Burns and Suzanne Renwick
James Burrows and Stephanie Wolf
Thomas L. Busch
Vivian Byers †
Rev. Albert Byrne †
C Frances H. Callaghan †
Ruth E. and Francis Callaghan †
William C. and Connie D. Carroll †
Joseph E. and Fern Check †
Donald and Oma Christle †
Robert and Judith Claflin
Alfred G. Colling
Clement and Molly Commers
Dr. Joseph P. and Louise Connolly †
Norb and Mary Ellen Conzemius

Mary Cullen McKeown and Tom McKeown
D William and Marilyn Dejarlais
Rev. Dennis K. Dempsey
Dr. Paul and Ann Dickinson
Drs. Mark Diekman and Deborah Pryor-Diekman
Thomas and Betty Nell Dolan
James and Christine Doody
Dr. George C. and Patricia † Dorsey
Most Rev. Paul V. Dudley, DD †
Thomas and Hannah Dzik
E Alfred and Mary Elder
Donald and Marilou Eldred
I Thomas and Patricia Emmer
J Larry and Janet Enerson
Theodore A. and Mary Estrem †
F Raymond and Genevieve Feltl †
Susanna Fleischhacker †
Rev. Martin P. Fleming
Richard H. and Margaret Fleming †
Paula Flück
Most Rev. Harry J. Flynn, DD
James and Elizabeth Foley
Lyle W. and Barbara Franke
Joleen R. Franta †
Francis and Jean Franta
Eugene and Mary Frey
Rev. Francis Fried
Clara Fulton
G Thomas Gainor and Jan Nolan Gainor
Elizabeth A. Gardner
Rev. Msgr. Francis J. Garvey †
Ronald and Brenda Gieneart
Philip † and JoAnn Gitter
Rev. Robert P. Goblirsch
Richard and Delphine Goldstrand †
Edward and Barb Gorski
Tom and Joleen Greene
Julie Grill
Dr. Joseph and Clarice Gyskiewicz
Robert † and June M. Gust
H Rev. Paul J. Hadusek †
Edward S. and Margaret Hagerty †
Raymond and Sally Haik
Mary Ellen Halverson
Hazel C. Heim †
Quentin † and Sally Heimerman

George and Katherine Henrich
Julia F. Herl †
Lawrence and Barbara Hessburg
Rev. Msgr. Patrick J. Hessian †
Eugene and Barbara Hickok
Rev. Mr. Gary and Jacqueline Hoffman
Marjorie Horst †
Marjory Hougher †
Rev. Leo Huber †
Patricia Huber and Jerry Cawley
Carolyn Huston
Clarence and Bernice Hynes
Shaun Irwin
I Richard and Ruth Ann † Jacobs
J Len and Bea Japs †
Donald and Marian Jardine †
Leo and Arlene Jarombek †
Ray † and Cleorie Johnson
Warren E. Johnson †
Clarence and Clara Jorgensen †
Paulette Joyer
Thomas and Shirley Jungels
K Mary F. Kading †
Charlotte M. Kangas †
Anne Keller
Barbara A. Keller †
Gerald † and Charlotte Kelly
Bernice Kelly †
Clarence and Dorothy Kelzer
Lorraine A. Kelzer
Mary Kay Kennedy
Laurence and Suzy † Kennedy
Robert and Margaret † Keppel
Adella P. Kerber †
Edwin Kerber †
Ralph and Bette Keyes †
Harry H. and Audrey Kirby †
Rev. Francis R. Kittock
James † and Mary Z. Klein
John L. and Kathleen † Kokesh
John L. † and Rajah Kolb
Richard and Karen M. Koppy
Joan C. Korkowski
Richard † and Mary Ann Kramer
Dr. Stephen and Marla Kramer
Vivian Kratz
Norbert and Teresa Krenik

Thomas and Janet Krocheski
Rev. Alphonse M. Kubat †
Kathryn Kubinski
Eunice Kuehn
L Kathrynne Kuhns
Suzanne Laddusire
N Joseph and Teresa Lahti
Stewart and Kathleen Laird
Louis and Loretta Langer
Phyllis A. Langfield
O James and Barbara A. Larkin †
Robert and Florence Larkin †
P Peter and Mary Larsen
Philip P. LaVelle †
Maurice and Alice Leuthner
Diane Liemandt-Reimann and Ronald Reimann
James F. and Eleanor Lyons †
Daniel and Jean MacDonald
Sheila MacDonald †
Daniel and Penny Malecha
Catherine Marien †
Barbara Martin
John A. and Dorothy Matschi †
Lawrence J. † and Barbara Matthews
Francis N. and Mary Louise Mayer †
Eugene Ebert † and Marian McCarty Ebert
R Darrel and Glenda McDonald †
Rev. Kevin McDonough
Hugh McElroy
Rosemarie M. McGiffin
Jay McGivern
Timothy J. McGough
Lawrence and Andrea † McGough
Michael and Janet McGough
Peter J. † and Mary McKenna
Michael McNamara and Mary Beth O'Reilly
Richard and Carol McNamara
John and Jane McNeill
Raul Andruet and Aida Mendez
Susan D. Meneely
Gerald and Kathleen Meyer
Doug and Sandy Milroy
Luther J. and Gertrude E. Moen †
Kathryn Doyle Mooney †
Rodger † and Marjorie Mountain

Barbara Mulcahy
Harold and Bernice Mullen
James and Franchelle Mullin
Catherine Grace Murphy †
William Murphy
N Martin E. Newell †
Timothy P. Nichols
Mickey K. Nickelson
Robert A. † and Helen Nicklaus
F. Gerald and Monica M. Nilles
O Kay O'Brien Bunker †
Richard and Suzanne Opitz
P Phil and Connie Paquette
Rev. William Paron
Robert and Rita Peichel
Wayne and Patricia Pelzel
Warren † and Rachel Pennig
Valeria Pezzani †
Henry and Dorothy Piché †
Mildred J. Pike †
Ron Plante
Terrance Plante
Arthur Popehn
Rev. Francis Pouliot
Robert † and Dorothy Prax
Alexander † and Caroline Puzak
George † and Anne F. Raiche
R Fred J. Ranallo †
Arnold † and Deanna D. Rasmussen
William and Joanne Reiling
John J. and Eleanor Reusch †
Richard G. and Dorothy Revord †
Br. William Rhody, FSC †
Gerald and Diane Riebel
Most Rev. John R. Roach, DD †
Robert J. and Dorothy H. Roth
John and Carol Rueb
Rev. Patrick J. Ryan
Margaret Ryan †
S Robert and Mary † Sahli
Robert F. and Kathleen M. Sather
M. Scott and Ellen Sayer
James and Mary Schacker
Roger and Irma Scherer
Bernadine E. Schmidt
Rev. George V. Schmit, Jr.
Robert and Marianne Schoenecker
V

Marguerite Schoengart
William and Ranee Schouviller
Elizabeth Schreiner
Mary J. Schubert
W Ed and Mary Schumacher
Steven Schuster
Kenneth Schwalbach † and Jan Kohler
Ann Schweitzer
Kenneth W. Scully †
Thomas and Janice Segar
James and Lucia Seidel
Greg and Sara Seifert
David and Patricia Serreyn
John L. Shrake †
Mark A. Shrake
Rev. Leonard F. Siebenaler
Nicholas G. and Susan † Simons
Rev. Robert Sipe
Brien Slawik and Monika Strom
Harold and Sharon Slawik
Jerome and Delores Slawik
George A. and Jeanne Slipka †
Ronald and Mary Smith
Stanley and Gladys Sommers †
Robert L. and Lucille Speeter †
Rev. Msgr. Stanley J. Srnec †
Jack and Nan Steger
John and Eleanor Steichen
Y Agnes Stensby
Z Florian J. Sterner
Mark and Lee Ann Sticha
William † and Anne Stocks
Gertrude C. Stoltz †
Clara Storms †
Robert and Anne Strachota
JoAnne Streich †
Michael and Marilyn Sullivan
Carol A. Swanson
Steven and Patricia Szarke
T Gerald † and Bernice Tacheny
Dr. Joseph and Mary Thul
Rev. Michael M. Tix
Leonard and Lois Tracy †
Michael and Michele Traeger
Margaret A. Turner †
Donald and Jolene Twombly
Bernard and Kathleen Vagnoni

Lawrence and Suzanne Vanden Plas
Pete Vestol †
Nancy Villwock
Bill and Barbara Wagner
Yvonne B. Wagner †
Rev. Msgr. John C. Ward †
Rob and Mary Weber
Marlys J. Weber
William Wegscheider †
Jerome and Mary Ann Weigenant
Don † and Arlene Welbes
Albert J. † and Mildred Wesely
Thomas J. and Gloria Wesely
Bob and Mary Wesslund †
Judith Whitacre
Dorothy and George White †
Kathleen M. Wichmann
Richard † and Sunny Wicka
Angela R. Widi †
Martha H. Wiggins †
Theresa Wilkes
Rose Williams
Steven and Lynn Wolf
Daniel T. Wolfe and Carol Frey Wolfe
Rev. Richard J. Wolter †
Genevieve R. Woods †
Rev. Msgr. Robert J. Wyffels †
Alma E. Young †
Richard D. Zarneke
Germaine Zeglin †
George † and Susan Zirnhelt
Leonard and Irene Zvanovec



from homelessness to independence with kindness and support

In 2017, the Catholic Community Foundation (CCF) focused its social impact grants on organizations serving young mothers facing homelessness.

“This money comes from a generously-funded endowment created by visionary donors,” says Meg Payne Nelson, program officer at CCF. In 1998, knowing CCF had the requisite grantmaking skills, the founding group of donors established the Community Priorities fund.



Photo provided by Haven Housing

“These donors wanted to come together to serve the unique needs of the poor and vulnerable in our community, and in particular, the elderly, school-aged youth, and young mothers,” says Nelson. The fund is perpetual and it is growing because it continues to accept additional gifts from anyone who believes in responding to God’s call for us to love the most vulnerable in our community.

“We knew from our research that no other physical, financial, or sociological need of young families can be addressed until their housing situation has been stabilized,” says Nelson. “So this year’s goal of serving the needs of mothers with young children focused exclusively on those experiencing homelessness.” A total of \$63,000 was distributed among eight organizations, including St. Anne’s Place (now part of Haven Housing) and Theresa Living Center.

ST. ANNE’S PLACE

From a woman’s first moments at St. Anne’s Welcome Center, the environment and the staff aim to soothe and start building trust. The families experience a supportive trauma-informed CARE (Child-Adult Relationship Enhancement) model, which aims to minimize the effects of trauma, strengthen the mother-child bond, promote early childhood development, and encourage parent education and empowerment.

St. Anne’s Place is the first shelter in Minnesota to use the CARE model. “It’s so important,” says Julie Kelley, executive director. “If left untreated, trauma seeps into everything and can last a lifetime.”

The CCF grant allows St. Anne’s to focus specifically on very young mothers and their children. In addition to housing, the families get help setting goals, and creating individual safety and coping plans. Safety plans encourage women to think through potentially dangerous situations and, in advance, determine steps or trusted people that could help.

Coping plans are used when a woman starts to feel angry or upset, providing steps to help her move past conflict. “If they are revving up and feel ready to run or lash out, it helps them realize it’s OK to simply say, ‘I need 5 minutes,’” says Kelley.

St. Anne’s also involves the mothers in the education of their children with Head Start and Early Childhood Family Education. Staff ensures the mothers are completely comfortable with their child’s teacher and classroom before they start school. “We want the moms to have a voice,” says Kelley. “In many cases, their own parents had little to do with their education, so it’s new territory for many of them.”

THERESA LIVING CENTER

A CCF grant also funded Theresa Living Center’s residential program, which provides housing for single women who are pregnant or have a child under the age of 1, and a second program that provides case management services and rental assistance to single-parent families living in their own apartments. Both programs serve individuals and families after they have experienced homelessness.

“A lot of our work is helping our clients plan the next steps in their lives, especially in the areas of finding affordable housing and a living-wage job,” says Lucy Zanders, executive director.

Escalating rents have complicated the work. “The families that come to us don’t make a living wage, so we often end up helping them find other subsidized housing,” says Zanders.

In addition to rental assistance, Theresa Living Center helps the women set goals and create plans that help them move, one step at a time, toward independent living. Some women complete GEDs. Others work on certificate programs or college degrees. And some pursue work in fields with higher wages.

Zanders told of one success story. “We had a mom who enjoyed physical labor and looked into driving a forklift. She got an interview at a factory; they liked her and said they would help her get certified. She got the job and we helped her get housing based on her new salary.”

FROM HOUSING TO A HOME

“This year’s grants felt especially powerful,” says Nelson. “They allowed the generosity of our donors to help two generations at the same time. And because the eight grantees serve young mothers in crisis or transition with such compassion and care, the result is not simply housing, it’s a *home*.”

If you are interested in learning more about the Community Priorities fund and how you can contribute, contact CCF Program Officer Meg Payne Nelson at 651.389.0882. ●

Legacy Fund

The Legacy Fund allows the Catholic Community Foundation to respond to emerging, unmet needs in our community. We are grateful for these donors who have committed gifts to the Legacy Fund and invite you to join them in strengthening our community together. The † symbol denotes those donors to the Legacy Fund who have passed. Please hold them in your thoughts and prayers.

Bolded names denote those donors who made a gift to the Legacy Fund in fiscal year 2017.

A Anonymous Donors
Bernadette Amerongen
Mary C. Anderson †
Betty S. Andrews
James A. Audette
B Gordon and Jo Bailey
G. Kendall and Nancy Baldry
Robert and Mary Belongie
James and Georgine Benoit
John and Cynthia Beuerlein
John and Nancy Bierbaum
Kerrie Blevins
Rev. David N. Blume
Fred and Sue Brass
Gerald and Catherine Brennan
Thomas and Bea Brill †
John and Kathleen Burke
Thomas L. Busch
C Verle Carlin
Josephine Benz Carpenter †
Helen R. Coffey
Alfred G. Colling
David Commers † and Janet Nelson
Commers
Norb and Mary Ellen Conzemius
D Leo and Janis Dehler
Lawrence and Mary DeMeules
Scott and Jane Deming
Diocese of New Ulm
Michael and Virginia Dwyer
E Edward Ehlenz
Alfred and Mary Elder
Marilou and Donald Eldred
F William and Leveda Faulkner
Jim and Jane Fennell
Donavon and Joyce Fisher
Paula Flück
Robert and Sharon Flynn
Gene and Mary Frey
Rev. Francis L. Fried
James Frisell and Karent Knepper Frisell
G William and Barbara Gabler
Bill and Joan Gacki
Thomas Gainor and Jan Nolan Gainor
Chuck and Arlene Garrity
Michael J. Gerard
Julie and Michael Gerend
GiveMN

Brig. Gen. Leo C. and Rosemary Goodrich †
Frederick and Barbara Gorka
Timothy and Mary Gray
Jim and June Gulden
H Albert and Colleen † Haik
Quentin † and Sally Heimerman
Paul and Moira Heinicke
Pat Huber and Jerry Cawley
Richard Huberty and Jean Hurlbert
Thomas and Julie Hurley
J Len and Bea Japs †
John and Kay Jasper
Craig and Patricia Jilk
Jerome and Rose Jungquist
Paul J. Jungquist
K Greg and Michelle Keeley
Barbara A. Keller †
Gerald and Phyllis Kelly
John and Paula Kelly
Larry and Suzy Kennedy
Jim Keyes
Elizabeth Keyes
Paul and Alison Knapp
Ed and Julie Kocourek
Emery and Karen Koenig
Stephen and Laura † Kolar
Philip Kunkel
Margaret Kuznia
Donald and Joanne Kvasnicka
L Timothy and Roxanne Lackas
George and Carol Lang
Robert and Florence Larkin †
Steven and Joan Larson
William and Jeanine Lauer
Brian and Jane Lavin
Dcn. Lawrence and JoAnn Lawinger
Steven and Mischelle Lentz
Thomas Leonard
Tom Letscher and Sheila Glancy Letscher
Maurice and Alice Leuthner
Robert Lloyd and Sally Rystrom
M Malloy Montague Karnowski Radosevich
and Co., P.A.
Renee M. Malloy
Marjorie Mathison Hance
Marion McCarty Ebert and Eugene † Ebert
Malcolm and Mary McDermid
McGough Foundation

Larry and Andrea † McGough
Monica E. McGough
Timothy McGough
Joseph and Paula McGrath
Thomas McKeown and Mary Cullen
McKeown
Harry G. McNeely
Robert and Mary Mersky
Mary E. Michaels
Anne Cullen Miller and Mark Miller
Herbert † and Elizabeth Mischke
Angela Moloney
Thomas and Louise Montague
Virginia Mulcahy
James and Franchelle Mullin
Brian Murray and Shelly McGill Murray
N George and Ann Nemanich
Lucille M. Nickolay
William and Joan Nickolay
O Richard and Suzanne Opitz
P PadillaCRT
Anita Pampusch and Frank Indihar †
David and Debbie Paquette
Dr. H. William and Molly Park
Valeria Pezzani †
Stuart and Margery Pihlstrom
Mildred J. Pike †
Raj and Marie Pillai
Ramon and Marilyn Pogue
Arthur J. Popehn Foundation
Premier Banks
R Pamela D. Rauén
Rauenhorst Family Foundation
Mark and Karen Rauenhorst
Donald and Jean Regan
James W. Regan
Sean and Mary Regan
Carl Remick
Richard and Dorothy Revord †
J. Peter and Mary Ritten
Randall and Janet Rogers
Dolores M. Rufenacht
S Timothy and Mary Scanlan
Mary Schaffner and Robert Lee
Gary and Carolyn Scherer
Roger and Irma Scherer
Roger † and Angeline Schnobrich
Casey and Susan Ann Scott

James and Lucia Seidel
Jim and Annie Seidel
Sexton Family Foundation
Jerry and Marilyn Sexton
Michael and Charlene Sheahan
Terrance and Marlene Shelstad
Mark A. Shrake
Silver Lake Dental
Harold and Sharon Slawik
Jerome and Delores Slawik
Rev. Msgr. Joseph J. Slepicka
Rhonda Smieja
Ronald and Mary Smith
St. Paul Foundation
Jack and Nan Steger
Robert and Anne Strachota
Dr. Richard and Kathleen † Student
Roger and Margaret Swenson
T Jeffrey and Jane Tegeler
John and Joann Theissen
Alan and Monaliza Tholkes
Louis † and Patricia Tinucci
Donald and Dolores Traxler
Margaret A. Turner †
V Lawrence and Suzanne Vanden Plas
Jules and Joseph Vierling
Nancy B. Villwock
Leslie Vork
W William and Barbara Wagner
Marcella Flaten Wartman
William and Rosalie Weaver
Thomas and Rose Winkels
Otto C. Winzen Memorial Funds
Y **YourCause, LLC Trustee for PricewaterhouseCoopers, LLP**
Kathleen Yung
Z Richard D. Zarneke
Richard and Kathleen Zieman
George † and Susan Zirnhelt



Agency Funds

Catholic parishes, schools, and institutions partner with the Catholic Community Foundation to manage charitable assets. Always taking into account the appropriate amount of risk, our portfolio balances the twin objectives of investing in a morally responsible manner while attempting to maximize total financial return over the long term.

- A Annunciation Funds, Minneapolis
Ascension Education Fund, Minneapolis
Assumption 2000 Fund, Richfield
- B Basilica of St. Mary Endowment Fund, Minneapolis
Blessed Trinity Catholic School Endowment Fund, Richfield
- C Catholic Cemeteries Funds
Catholic Charities of St. Paul and Minneapolis Funds
Cathedral of St. Paul Funds, St. Paul
Catholic Senior Services Investment Fund
Center for Mission Fund, St. Paul
Corpus Christi Fund, Roseville
- G Guardian Angels Funds, Oakdale
- H Highland Catholic School Funds, St. Paul
Hill-Murray Foundation Scholarship Funds, Maplewood
Hill-Murray School Tyler Family Tuition Fund, Maplewood
Holy Childhood Long-Term Investment Fund, St. Paul
Holy Family Academy Endowment Fund, St. Louis Park
Holy Name Endowment Fund, Minneapolis
Holy Name of Jesus Funds, Wayzata
Holy Rosary Catholic Church Capital Improvements Fund, Minneapolis
Holy Spirit Funds, St. Paul
- I Immaculate Heart of Mary - St. Luke School Funds, St. Paul
- J Diocese of New Ulm Fr. John Joyce Education Funds
- K Catholic Charities Funds, St. Paul
- L League of Catholic Women Funds, Minneapolis
Lumen Christi Funds, St. Paul
- M Marquette School Endowment Fund, Virginia
Mary Queen of Peace Funds, Rogers
Mary, Mother of the Church Fund, Burnsville
Maternity of Mary/St. Andrew Catholic School Investment Fund, St. Paul
Most Holy Redeemer School Endowment Fund, Montgomery
Most Holy Trinity Fund, Veseli
- N Nativity of the Blessed Virgin Mary Agency Fund, Bloomington
Nativity of Our Lord Endowment Trust Fund, St. Paul
NET Ministries Funds, West St. Paul
- O Our Lady of Grace Funds, Edina
Our Lady of the Lake Funds, Mound
Our Lady of Peace Funds, Minneapolis
Our Lady of Victory Long Term Investment Fund, Minneapolis
- R Risen Christ School Funds, Minneapolis
- S Sacred Heart Investment Fund, Robbinsdale
- Ss. Joachim and Anne Funds, Shakopee
Ss. Peter and Paul Funds, Medina
- St.A St. Adalbert Long-Term Reserve Fund, St. Paul
St. Agnes Investment Fund, St. Paul
St. Albert Funds, Albertville

- St. Albert the Great Parish Fund, Minneapolis
St. Alphonsus Long-Term Investment Fund, Brooklyn Center
St. Anastasia New Office Space Fund, Hutchinson
St. Anne's Educational Foundation Funds, Minneapolis
St. Anthony Perpetual Care Fund, Watkins
- St.B St. Bernard School Fund, Cologne
St. Bridget of Sweden Reserve Fund, Lindstrom
- St.C St. Charles Church Fund for St. Michael Cemetery, Bayport
St. Columba Father Louis Morin Endowment Fund, St. Paul
- St.D St. Dominic Funds, Northfield
- St.E St. Edward Agency Fund, Bloomington
St. Elizabeth Ann Seton Funds, Hastings
- St.F St. Francis Cabrini Sally Jernberg Memorial Fund, Minneapolis
St. Francis de Sales Funds, St. Paul
St. Francis - St. James School Funds, St. Paul
- St.G St. Genevieve Capital Agency Fund, Centerville
- St.H St. Henry Cemetery Property Development and Capital Improvement Fund, Monticello
- St.J St. John Investment Funds, Hector
St. John the Baptist Funds, Excelsior
St. John the Baptist Funds, Hugo
St. John the Baptist Funds, Jordan
St. John the Baptist Funds, New Brighton
St. John the Baptist Funds, Savage
St. John the Baptist School Endowment Fund, Vermillion
St. John the Evangelist School Endowment Fund, Duluth
St. John the Evangelist Funds, Little Canada
St. John Vianney Seminary Investment Fund, St. Paul
St. Joseph Parish Fund, Montevideo
St. Joseph Calvary Cemetery Perpetual Care Endowment Fund, Red Wing
St. Joseph Funds, Waconia
St. Joseph Funds, West St. Paul
St. Jude of the Lake Endowment Trust Fund, Mahtomedi
- St.K St. Katharine Drexel Building Fund, Ramsey
- St.L St. Louis, King of France Funds, St. Paul
St. Luke Agency Fund, Clearwater
- St.M St. Maron Funds, Minneapolis
St. Mary Fund, New Trier
St. Mary Funds, Sleepy Eye
St. Mary of The Lake Endowment Fund, White Bear Lake
St. Mathias Cemetery Fund, Hampton
St. Maximilian Kolbe Funds, Delano
St. Michael Funds, Farmington
St. Michael Cemetery Fund, Prior Lake
St. Michael Jeanett R. & Lawrence F. Klein 20 Year Term Fund, Stillwater

- St. Michael Funds, St. Michael
St. Michael Funds, West St. Paul
- St.N St. Nicholas Funds, Carver
St. Nicholas Fund, New Market
- St.O St. Odilia Endowment Fund, Shoreview
- St.P St. Patrick Funds, Edina
St. Patrick Long Term Care Fund, Oak Grove
St. Patrick Long Term Investment Fund, St. Paul
St. Paul Church Fr. Tim Nolan Vocation Endowment Fund, Ham Lake
St. Paul Seminary Investment Fund, St. Paul
St. Paul's Outreach Operating Reserve Fund, West St. Paul
St. Peter Claver Funds, St. Paul
St. Peter Parish Endowment Fund, Forest Lake
St. Peter Funds, Richfield
St. Peter Cemetery Care Operating Fund, North St. Paul
St. Peter Funds, St. Peter
- St.R St. Raphael School Endowment Fund, Crystal
St. Rita Fund, Cottage Grove
St. Rose of Lima Funds, Roseville
- St.S St. Stephen Catholic Church Fund, Minneapolis
- St.T St. Thomas the Apostle Endowment Fund, Corcoran
St. Thomas Aquinas Funds, St. Paul Park
St. Thomas More Catholic Community Fund, St. Paul
St. Timothy Funds, Blaine
St. Timothy Funds, Maple Lake
- St.V St. Vincent de Paul Funds, Brooklyn Park
- St.W St. Wenceslaus Funds, New Prague



Gifts to Support Our Operations

Although we don't ask, we are grateful for these donors who have generously given gifts in support of our mission and outreach to the community this year.

John and Kim Arens
Dr. R. Michael and Sharon Bowen
Catholic Financial Life
Dr. Joseph and Louise Connolly
Mary K. Crowley
Dinesh Pokwal
Premier Bank

Tanya M. Raso
Kent and Muriel Roessler
Sexton Family Foundation
Rev. Leonard F. Siebenaler
St. Bernard's Catholic United Financial
Allison Yem
Susan M. Zirnhelt

Board of Directors

Josephine Bailey
Community Volunteer

John C. Beuerlein – Immediate Past Vice Chair
Chief Economist, Senior Investment Advisor,
Pohlad Companies

Kathy Cooney
Executive Vice President and
Chief Administrative Officer, Health Partners

Thomas E. Gainor
Retired First Vice President and COO, Federal
Reserve Bank of Minneapolis

Julie Gerend
Sales Director, Wells Capital Management

**Most Reverend Bernard A. Hebda –
Chairperson, *ex officio***
Archbishop of the Archdiocese of Saint Paul
and Minneapolis

David Heinsch
Senior Director, Corporate and Investor
Relations Practice, PadillaCRT

Julie K. Hurley – Treasurer
President, Preferred Management Services, Inc.

Elizabeth Keyes, J.D.
Retired Vice President, U.S. Bank

Paul R. Knapp, Sr., J.D.
Vice President, Vomela

Edward J. Kocourek
Retired Executive Vice President and CFO,
The Egan Companies

Emery Koenig
Retired Vice Chairman and Chief Risk Officer,
Cargill, Inc.

Very Reverend Charles Lachowitzer, *ex officio*
Vicar General and Moderator of the Curia,
Archdiocese of Saint Paul and Minneapolis

George C. Lang
Retired President, Overlook Realty Investment
Advisors, LLC

Mimi Daly Larson
Vice President of Mission Advancement,
Science Museum of Minnesota

Thomas A. Letscher, J.D. – Vice Chairperson
Partner, Fox Rothschild LLP

Arthur Lewis, Jr.
Director, Application Development-Advisor
Service Technologies, Ameriprise Financial

Marjorie Mathison Hance
Retired Vice President for External Relations,
St. Catherine University

Thomas H. McCarr, J.D.
Tax Partner, PwC LLP

Larry McGough
Retired Chairman, McGough Companies

Greg Melsen
Retired CFO and Self-Employed Consultant

Thomas J. Mertens, *ex officio*
CFO, Archdiocese of Saint Paul and Minneapolis

Marie C. Pillai
Vice President and Chief Investment Officer,
General Mills

Sean O. Regan
Vice Chairman and President,
Premier Bank – Roseville Office

Mary E. Schaffner, J.D. – Secretary
Senior Vice President and Senior Company
Counsel, Wells Fargo

Harold J. Slawik, J.D.
Partner, New Counsel, PLC

Michael F. Sullivan, Ph.D.
Retired Associate Professor, Opus College of
Business, University of St. Thomas

Jane Wyatt
Vice President and Client Portfolio Manager,
Advantus Capital Management

**COMMUNITY MEMBERS SERVING
ON BOARD COMMITTEES**

Gerald Brennan	John Mauriel
Norbert Conzemius	Kate Seng
Alfred Elder	Michael Traeger
J.J. Kirby	Roger Vasko
Diane Liemandt-Reimann	Kate Wenger

Our Staff

Anne Cullen Miller, M.B.A. President	Bill Marsella, M.S.W. Director of Partner Relations
Helen Twomey, CPA Vice President of Finance and Administration	Meg Payne Nelson Data and Grants Program Manager
Becky Abbott Senior Accountant and Lead Financial Analyst	Natalie Posteuca Staff Accountant
Angela Dimler, M.Ed. Director of Strategic Communications	Michael A. Ricci Jr., CFP®, CAP® Director - Professional Outreach and Investments
Mary Haeg, J.D. Development/Gift Planning Officer	Jules Vierling Grants Manager
Lisa Haemmerle, M.A. Office Manager/Development Coordinator	Wendy Waiwaiole, M.A. Executive Assistant

All efforts have been made to ensure the accuracy of information contained within this annual report. We have utilized abbreviations with consistency within all lists to improve readability. If you notice an error or omission, please call 651.389.0300.



Catholic Community
FOUNDATION
OF MINNESOTA